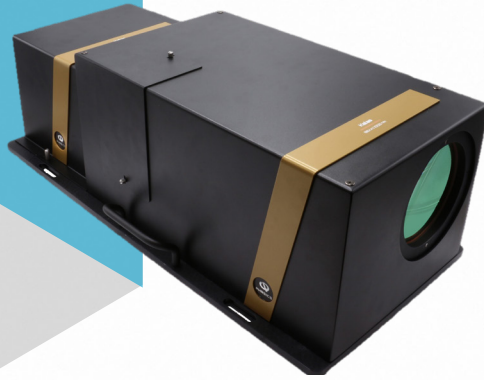




**PHASICS**  
the phase control company



# KALAS

## LARGE BEAM ANALYSIS WITH SID4

Kalas is a modular solution that integrates all the necessary components to characterize **beams of up to 127mm (5")** with **high accuracy** (< 15 nm RMS).

Embedding all the advantages of PHASICS technology, Kalas enables to easily perform **the full characterization of your beam** under test. In a **single-shot**, Kalas measures wavefront and intensity, and calculates **divergence, waist dimensions,  $M^2$** , and all the relevant information to fully qualify your beam.

In addition, **all the modules are standalone**, including the SID4 wavefront sensor.

### KEY FEATURES



Accuracy  
< 15 nm RMS



Beam diameter up  
to 127 mm



Divergence,  
 $M^2$  & WFE



All the modules are  
standalone



Source wavelength  
customized on demand



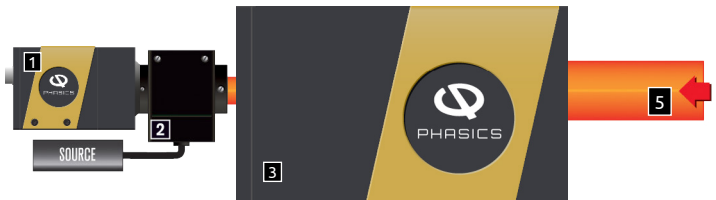
Insensitive to  
vibration

# HOW IT WORKS: 2 STEPS

→ Calibrate the aberrations from the measurement system



→ Characterize your beam



- 1 SID4 Wavefront sensor
- 2 R-Cube Illumination module
- 3 Beam expander
- 4 Reference flat mirror
- 5 Incident beam under test

Kalas  
modules

## SPECIFICATIONS

Compatibility	SID4 / SID4-HR / SID4-SWIR / SID4-SWIR-HR
Entrance pupil diameter <sup>1</sup>	8 mm / 15 mm / 25.4 mm / 50.8 mm / 101.6 mm / 127 mm
Source wavelength <sup>2</sup>	405 / 530 / 625 / 740 / 780 / 810 / 850 / 940 / 1050 / 1550 nm
Accuracy	< 15 nm RMS
Weight <sup>3</sup>	15 kg
Dimensions <sup>3</sup>	450 x 350 x 250 mm <sup>3</sup>

<sup>1</sup> Larger pupil available on demand

<sup>2</sup> Other source available on demand

<sup>3</sup> For the 127 mm version